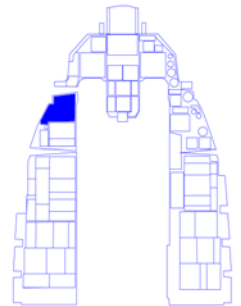


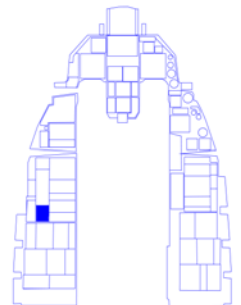
Falcon 4.0: Allied Force

Ramp Start Procedure

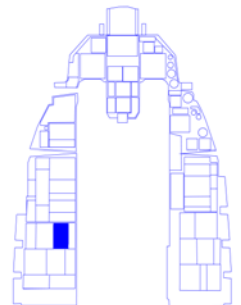
- 1 Panel: **LEFT AUXILIARY**
Set PARKING BRAKE on [Alt-P].



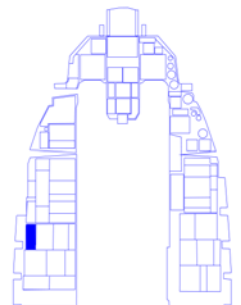
- 2 Panel: **ELEC**
Set switch to MAIN PWR (2 clicks)
[Ctrl-Alt-F2].



- 3 Panel: **EXT LIGHTING**
Set MASTER to NORM [Ctrl-Alt-F9].
Set ANTI-COLLISION [Ctrl-Alt-F10] and
WING/TAIL/FUSELAGE [Ctrl-Alt-F11]
on, and set FLASH [Ctrl-Alt-F12].

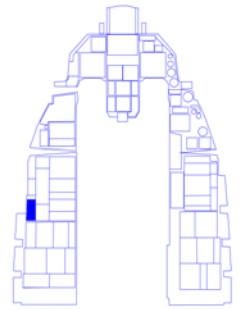


- 4 Panel: **FUEL**
Set MASTER to ON [Ctrl-Shift-F7] and
ENG FEED to NORM [Ctrl-Shift-F6/F5]
(inc/dec).

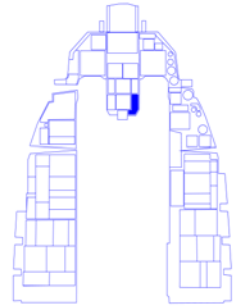


Panel: **EPU**

- 5 Verify EPU switch is set to NORMAL. Adjust if necessary [Alt-E].

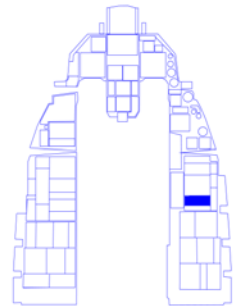


- 6 Verify **FUEL QTY SEL** is set to NORM. Adjust if necessary [Shift-Ctrl-F2/F1] (inc/dec).

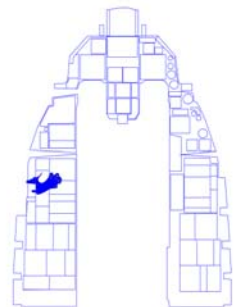


Panel: **AIR COND**

- 7 Set AIR SOURCE to NORM [Shift-Ctrl-F4/F3] (inc/dec).

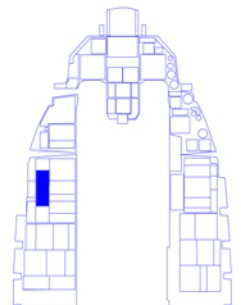


- 8 Set throttle to idle.

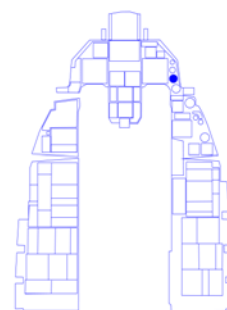


Panel: **ENG & JET START**

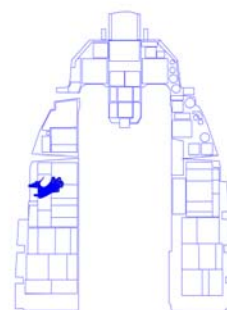
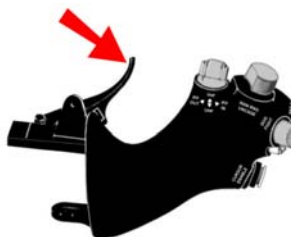
- 9 Set JFS to START2 [Shift-J].



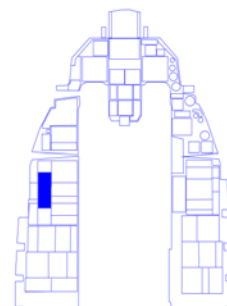
- 10 Watch RPM. When it reaches 20%, move throttle to 50%.



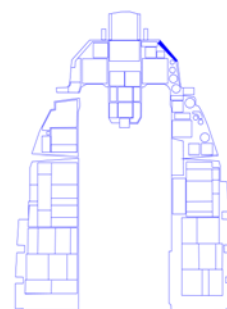
- 11 Throttle idle detent [Alt-I]. Return throttle to idle. RPM should increase to 70%.



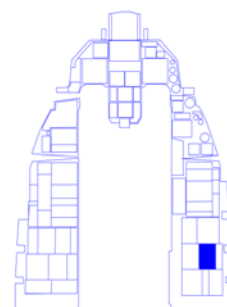
- 12 Panel: **ENG & JET START**
Verify JFS has switched OFF.



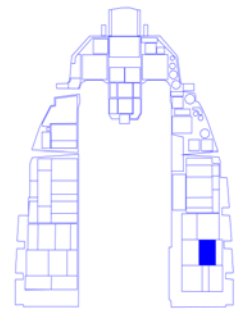
- 13 Panel: **Right Brow**
Verify HYD OIL warning light has switched off.



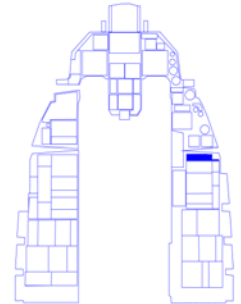
- Panel: **AVIONICS POWER**
Turn on FCC [Shift-Alt-F6],
SMS [Shift-Alt-F7],
UFC [Shift-Alt-F9],
MFD [Shift-Alt-F8],
GPS [Shift-Alt-F10], and
DL [Shift-Alt-F11].



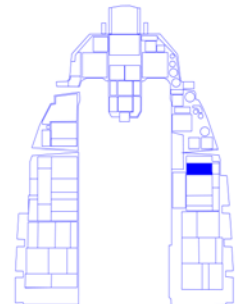
- 15 Panel: **AVIONICS POWER**
Set INS to ALIGN NORM
[Ctrl-Alt-F8/F7] (inc/dec). Takes about 8 minutes to warm up.



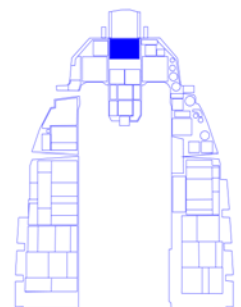
- 16 Panel: **SENSR PWR**
Turn on LEFT HDPT [Shift-Alt-F3],
RIGHT HDPT [Shift-Alt-F4],
FCR [Shift-Alt-F5] and
set RDR ALT to STDBY [Ctrl-A].



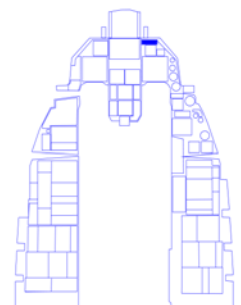
- 17 Panel: **HUD**
Set ATT/FPM to FPM [Shift-Ctrl-Alt-P].



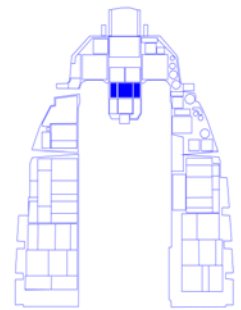
- 18 Turn on HUD using SYM and adjust brightness
[Shift-Ctrl-Alt-X/Z] (inc/dec).



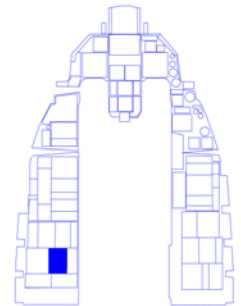
- 19 Panel: **DED**
Check INS status in DED. INS aligned when
line 1 reaches 10.0 and will flash RDY.



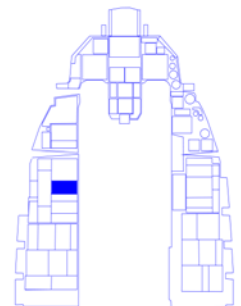
- 20 Verify no flags in ADI, VVI, and AOA displays.



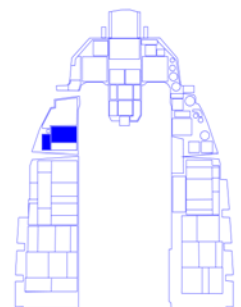
- 21 Panel: **MANUAL TRIM**
Verify TRIM is reset [Shift-•].



- Panel: **AUDIO1**
Adjust volume for
22 COMM1 [Ctrl-Alt-]/[] (up/dn),
COMM2 [Shift-Ctrl-Alt-]/[] (up/dn),
MSL [Shift-Ctrl-]/[] (up/dn) and
THREAT [Shift-Alt-]/[] (up/dn) as
needed.

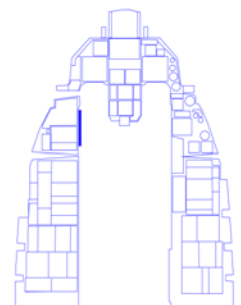


- 23 Turn on THREAT WARN AUX [Shift-F1] *,
EWS RWR [Ctrl-Alt-F6],
EWS JMR [Ctrl-Alt-F5],
EWS CHAFF [Ctrl-Alt-F3],
EWS FLARES [Ctrl-Alt-F4].
Set EWS MODE to MAN [Shift-X] (inc) or
[Shift-Z] (dec).

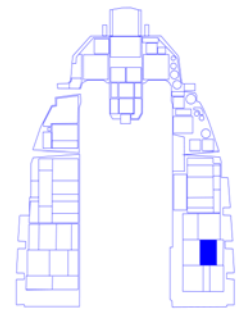


(* had to map this key to RWR-Power)

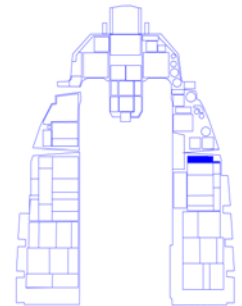
- 24 Arm the ejection seat [Shift-Ctrl-E].



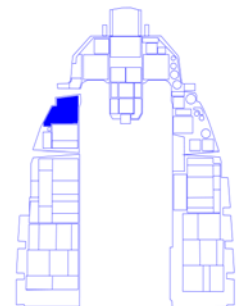
- 25 Panel: **AVIONICS POWER**
After INS is aligned,
switch to NAV [Ctrl-Alt-F8].
Can use [Caps Lock] to speed things up.



- 26 Panel: **SENSR PWR**
Turn on RDR ALT [Shift-A].



- 27 Panel: **LEFT AUXILIARY**
Turn LANDING LIGHTS [Ctrl-Alt-L] on
and Turn PARKING BRAKE [Alt-P] off.



- 28 Enable NWS [Shift-/].